



Just Hoods®  
ALWAYS

The hoodie is a staple of any young urbanite's wardrobe, and for over a decade **Just Hoods** have supplied top-quality, contemporary designs in the largest variety of colours available.

The brand new organic and recycled collection has launched this year for customers looking to shop for environmentally **Just Hoods** conscious clothing with style. The new sustainable range is **Just Hoods** first steps in helping to make a big difference to do better, to be better and to inspire change – change you can wear.

We stick to what we do best, and we're only getting better at it.



We always do things the right way, which is why we only use Worldwide Responsible Accredited Production (WRAP) and SEDEX certified factories.

As part of Just Hoods sustainability journey, all garments are officially PETA-Approved Vegan and 100% free of any animal ingredients.

Check out our website for more information.

f @justhoods    @justhoods    @justhoods



JH201  
Heather  
Grey

JH230  
New  
French  
Navy

CONTENTS

HOODIES

JH001 College Hoodie <b>NEW COLOURS</b>	8-10
JH001F Women's College Hoodie <b>NEW COLOURS</b>	12
JH002 SupaSoft Hoodie	14
JH003 Varsity Hoodie	16
JH004 Electric Hoodie	18
JH005 Women's Longline Hoodie	19
JH006 Sports Polyester Hoodie	20
JH008 Heather Hoodie	21
JH009 Baseball Hoodie	22
JH011 Epic Print Hoodie	23
JH012 Cosmic Blend Hoodie	24
JH013 Superbright Hoodie	25
JH014 Camo Hoodie	26
JH015 Hoodie Dress	28
JH016 Women's Cropped Hoodie	29
JH017 Surf Hoodie	30
JH018 Nautical Stripe Hoodie	31
JH019 Distressed Hoodie	32
JH020 Street Hoodie	33
JH021 Cross Neck Hoodie	34
JH090 Washed Hoodie	36
JH100 Chunky Hoodie	37
JH101 Graduate Heavyweight Hoodie	38
JH103 Game Day Hoodie	39

SWEATS

JH030 AWDIs Sweat <b>NEW COLOURS</b>	42
JH033 Baseball Sweat	44
JH035 Women's Cropped Sweat	45
JH036 Women's Fashion Sweat	46
JH038 Colour Block Sweat	47
JH046 Sophomore ¼ Zip Sweat	48
JH047 Fresher Full Zip Sweat	49
JH093 Washed Sweat	50
JH130 Graduate Heavyweight Sweat	51

JACKETS

JH041 College Jacket	54
JH043 Varsity Jacket	55
JH043F Women's Varsity Jacket	56
JH049 Varsity Puffer Jacket	57



ZOODIES

JH050 Zoodie <b>NEW COLOURS</b>	60
JH051 Urban Varsity Zoodie	62
JH052 Chunky Zoodie	63
JH053 Varsity Zoodie	64
JH055 Women's Zoodie	65
JH057 Sleeveless Zoodie	66
JH058 Heather Zoodie	66
JH059 Retro Zoodie	67
JH063 Baseball Zoodie	68
JH065 Women's Fashion Cropped Zoodie <b>NEW STYLE</b>	69
JH066 Sports Polyester Zoodie	70
JH068 Space Blend Zoodie	71
JH150 Graduate Heavyweight Zoodie	72

ORGANIC

JH201 Organic Hoodie <b>NEW STYLE</b>	77
JH0201J Kids Organic Hoodie <b>NEW STYLE</b>	78
JH230 Organic Sweat <b>NEW STYLE</b>	81
JH250 Organic Zoodie <b>NEW STYLE</b>	82

PANTS & SHORTS

JH074 Tapered Track Pant	86
JH077 Women's Tapered Track Pant	87
JH072 College Cuffed Jog Pant <b>NEW COLOUR</b>	88
JH080 Campus Shorts	89

KIDS

JH001J Kids Hoodie <b>NEW COLOURS</b>	92
JH003J Kids Varsity Hoodie	94
JH004J Kids Electric Hoodie	95
JH006J Kids Sports Polyester Hoodie	96
JH009J Kids Baseball Hoodie	97
JH014J Kids Camo Hoodie	98
JH030J Kids AWDIs Sweat	99
JH043J Kids Varsity Jacket	100
JH050J Kids Zoodie <b>NEW COLOURS</b>	101
JH051J Kids Urban Varsity Zoodie	102
JH053J Kids Varsity Zoodie	103
JH072J Kids Cuffed Jogpants	104
JH074J Kids Tapered Track Pant	105

Core colour guide	106
Contrast colour guide	108
Our Fabrics	110
PMS colour guide	111
Fit guide	112
AWDis Connect	114



JH001F  
Women's College  
Hoodie  
Page 12

JH001  
College Hoodie  
Page 8-10

THE HOME OF  
THE HOODIE

HOODIES

JH001 College Hoodie	NEW COLOURS	8-10
JH001F Women's College Hoodie	NEW COLOURS	12
JH002 SupaSoft Hoodie		14
JH003 Varsity Hoodie		16
JH004 Electric Hoodie		18
JH005 Women's Longline Hoodie		19
JH006 Sports Polyester Hoodie		20
JH008 Heather Hoodie		21
JH009 Baseball Hoodie		22
JH011 Epic Print Hoodie		23
JH012 Cosmic Blend Hoodie		24
JH013 Superbright Hoodie		25
JH014 Camo Hoodie		26
JH015 Hoodie Dress		28
JH016 Women's Cropped Hoodie		29
JH017 Surf Hoodie		30
JH018 Nautical Stripe Hoodie		31
JH019 Distressed Hoodie		32
JH020 Street Hoodie		33
JH021 Cross Neck Hoodie		34
JH090 Washed Hoodie		36
JH100 Chunky Hoodie		37
JH101 Graduate Heavyweight Hoodie		38
JH103 Game Day Hoodie		39



All Just Hoods garments have tear away labels for easy re-branding and the fabrics across the range are ideal for print and embroidery.

MAKE A STATEMENT  
ON THE STREET



	ARCTIC WHITE		ASH		HEATHER GREY	
	MOONDUST GREY		STEEL GREY		SHARK GREY NEW COLOUR	
	CHARCOAL		STORM GREY		BLACK SMOKE	
	JET BLACK	5XL 	DEEP BLACK	5XL 	BABY PINK	
	DUSTY PINK		CANDYFLOSS PINK		LIPSTICK PINK	
	HOT PINK		CRANBERRY		TRUE VIOLET	
	LAVENDER		PINKY PURPLE		MAGENTA MAGIC	
	ULTRA VIOLET		PURPLE		WILD MULBERRY	
	DUSTY PURPLE		PLUM		BURGUNDY SMOKE	
	BURGUNDY		FIRE RED		BRICK RED	
	RED RUST NEW COLOUR		RED HOT CHILLI		SUNSET ORANGE	
	BURNT ORANGE		ORANGE CRUSH		MUSTARD	
	GOLD		SUN YELLOW		SHERBET LEMON	
	VANILLA MILKSHAKE		PEACH PERFECT		NUDE	
	DESERT SAND		MOCHA BROWN		CARAMEL TOFFEE	
	HOT CHOCOLATE		APPLE GREEN		LIME GREEN	
	ALIEN GREEN		SPRING GREEN		KELLY GREEN	
	MOSS GREEN		DUSTY GREEN NEW COLOUR		COMBAT GREEN	
	OLIVE GREEN		BOTTLE GREEN		FOREST GREEN	
	PEPPERMINT		JADE		DEEP SEA BLUE	
	SKY BLUE		CORNFLOWER BLUE		TURQUOISE SURF	
	HAWAIIAN BLUE		DUSTY BLUE		TROPICAL BLUE	
	SAPPHIRE BLUE		ROYAL BLUE		AIRFORCE BLUE	
	DENIM BLUE		INK BLUE		NAVY SMOKE	
	OXFORD NAVY	5XL 	NEW FRENCH NAVY	5XL		



# JH001

## College Hoodie

XS-5XL\*

\*All colours available in XS-3XL – available in 5XL on selected colours

### NEW COLOURS

#### Key Features

- 74 great colours
- Twin needle stitching detail
- Double fabric hood

#### Specification

- 80% Ringspun Cotton / 20% Polyester
- 52% Ringspun Cotton / 48% Polyester [Charcoal]
- 75% Ringspun Cotton / 25% Polyester [Heather Grey]
- 70% Ringspun Cotton / 30% Polyester [Smoke Colours]

#### Weight

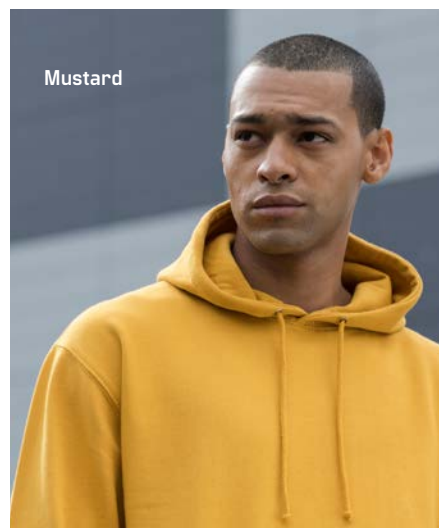
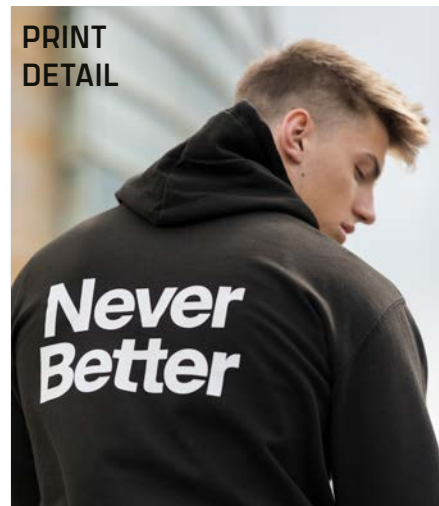
- 280gsm

- Women's sizes **pg.12**
- Kids sizes **pg.92**



# JH001

# NEVER BETTER



The hoodie is a staple of any young urbanite's wardrobe, and for 13 years **JustHoods** have supplied streetwear start-ups, sports teams and musicians with top-quality, contemporary designs in the largest variety of colours available.



# STEP OUT IN STYLE WITH JH001

# STYLE IS WHAT YOU CHOOSE



## JH001F Women's College Hoodie XS–XXL NEW COLOURS

### Key Features

- 34 great colours
- Twin needle stitching detail
- Double fabric hood

### Specification

- 80% Ringspun Cotton / 20% Polyester
- 52% Ringspun Cotton / 48% Polyester (Charcoal)
- 75% Ringspun Cotton / 25% Polyester (Heather Grey)
- 70% Ringspun Cotton / 30% Polyester (Black Smoke)

### Weight

- 280gsm

- Mens sizes **pg.8-10**

- Kids sizes **pg.92**



# JH002

## SupaSoft Hoodie

XS-XXL

Key Features

- Twin needle stitching detail
- 3 panel double fabric hood
- Soft feel peached Cotton faced fabric

Specification

- 80% Ringspun Cotton
- 20% Polyester

Weight

- 280gsm



	ARCTIC WHITE HOT PINK		ARCTIC WHITE FRENCH NAVY		HEATHER GREY SAPPHIRE BLUE
	HEATHER GREY JET BLACK		HEATHER GREY FRENCH NAVY		HEATHER GREY FIRE RED
	CHARCOAL HEATHER GREY		CHARCOAL JET BLACK		CHARCOAL BURGUNDY
	CHARCOAL ORANGE CRUSH		JET BLACK ARCTIC WHITE		JET BLACK HEATHER GREY
	JET BLACK HOT PINK		JET BLACK PURPLE		JET BLACK FIRE RED
	JET BLACK ORANGE CRUSH		JET BLACK GOLD		JET BLACK SUN YELLOW
	JET BLACK KELLY GREEN		JET BLACK SAPPHIRE BLUE		BABY PINK ARCTIC WHITE
	CANDYFLOSS PINK HOT PINK		HOT PINK HEATHER GREY		HOT PINK FRENCH NAVY
	PURPLE HEATHER GREY		PURPLE SUN YELLOW		BURGUNDY CHARCOAL
	BURGUNDY GOLD		BURGUNDY OXFORD NAVY		FIRE RED ARCTIC WHITE
	FIRE RED JET BLACK		SUN YELLOW FIRE RED		DESERT SAND VANILLA MILKSHAKE
	HOT CHOCOLATE VANILLA MILKSHAKE		LIME GREEN MAGENTA MAGIC		KELLY GREEN ARCTIC WHITE
	KELLY GREEN SUN YELLOW		BOTTLE GREEN FIRE RED		FOREST GREEN GOLD
	SKY BLUE ARCTIC WHITE		HAWAIIAN BLUE OXFORD NAVY		SAPPHIRE BLUE HEATHER GREY
	SAPPHIRE BLUE ORANGE CRUSH		SAPPHIRE BLUE LIME GREEN		ROYAL BLUE ARCTIC WHITE
	ROYAL BLUE SUN YELLOW		OXFORD NAVY CANDYFLOSS PINK		OXFORD NAVY SUN YELLOW
	OXFORD NAVY HAWAIIAN BLUE		NEW FRENCH NAVY HEATHER GREY		NEW FRENCH NAVY FIRE RED
	NEW FRENCH NAVY SKY BLUE				



# JH003

## Varsity Hoodie

XS–5XL\*

\*All colours available in S–XXL –  
available in XS, 3XL and 5XL on selected colours

### Key Features

- Twin needle stitching detail
- Double fabric hood with contrast inner
- Contrast flat lace drawcords

### Specification

- 80% Ringspun Cotton / 20% Polyester
- 52% Ringspun Cotton / 48% Polyester [Charcoal]
- 75% Ringspun Cotton / 25% Polyester [Heather Grey]

### Weight

- 280gsm

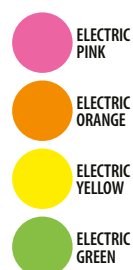
STAND OUT  
DESIGNS



Electric Yellow



Electric Orange



ELECTRIC PINK

ELECTRIC ORANGE

ELECTRIC YELLOW

ELECTRIC GREEN

## JH004 Electric Hoodie S–XXL

### Key Features

- Vibrant eye catching colours
- Twin needle stitching detail
- Flat lace drawcords

### Specification

- 85% Polyester
- 15% Ringspun Cotton

### Weight

- 280gsm

• Kids sizes **pg.95**



New French Navy

## JH005 Women's Longline Hoodie XS–XL

### Key Features

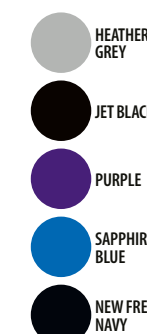
- Women's fit
- Twin needle stitching detail
- Three panel double fabric hood

### Specification

- 80% Ringspun Cotton / 20% Polyester
- 75% Ringspun Cotton / 25% Polyester (Heather Grey)

### Weight

- 280gsm



HEATHER GREY

JET BLACK

PURPLE

SAPPHIRE BLUE

NEW FRENCH NAVY



Arctic White

# JH006

## Sports Polyester Hoodie

S-3XL

### Key Features

- Sporty fit
- Twin needle stitching detail
- Double fabric hood

### Specification

- 100% Polyester

### Weight

- 200gsm

• Kids sizes **pg.96**



QUALITY

# JH008

## Heather Hoodie

S-XXL

### Key Features

- Slim fit lightweight hoodie
- Soft feel lightweight fabric
- Twin needle stitching detail

### Specification

- 52% Ringspun Cotton
- 48% Polyester

### Weight

- 225gsm



HOOD DETAIL



Navy Heather



- ARCTIC WHITE  
JET BLACK
- HEATHER GREY  
JET BLACK
- CHARCOAL  
HEATHER GREY
- CHARCOAL  
JET BLACK
- JET BLACK  
FIRE RED
- JET BLACK  
GOLD
- JET BLACK  
SAPPHIRE BLUE
- BABY PINK  
HEATHER GREY
- BURGUNDY  
CHARCOAL
- OXFORD NAVY  
HEATHER GREY
- OXFORD NAVY  
BURGUNDY
- SOLID BLACK  
BLACK CAMO
- SOLID GREEN  
GREEN CAMO



## JH009 Baseball Hoodie S-XXL

- Key Features**
- Twin needle stitching detail
  - Contrast raglan sleeves and drawcords
  - Contrast double fabric hood

- Specification**
- 80% Ringspun Cotton / 20% Polyester
  - 52% Ringspun Cotton / 48% Polyester (Charcoal)
  - 75% Ringspun Cotton / 25% Polyester (Heather Grey)
  - 70% Ringspun Cotton / 30% Polyester (Camo colours)

**Weight**  
• 280gsm

• Kids sizes **pg.97**



- ARCTIC WHITE
- HEATHER GREY
- CHARCOAL
- JET BLACK
- BURGUNDY
- NEW FRENCH NAVY

## JH011 Epic Print Hoodie XS-3XL

- Key Features**
- Twin needle stitching detail
  - Two panel double fabric hood
  - No pocket for maximum print surface area

- Specification**
- 80% Ringspun Cotton / 20% Polyester
  - 52% Ringspun Cotton / 48% Polyester (Charcoal)
  - 75% Ringspun Cotton / 25% Polyester (Heather Grey)

**Weight**  
• 280gsm



Cosmic Navy  
White



MARL EFFECT



HOOD  
DETAIL

- COSMIC GREY  
BLACK
- COSMIC BLACK  
WHITE
- COSMIC RED  
BLACK
- COSMIC BLUE  
BLACK
- COSMIC NAVY  
WHITE

## JH012 Cosmic Blend Hoodie XS–XXL

### Key Features

- Twin needle stitching detail
- Double fabric hood
- All over melange effect fabric

### Specification

- 70% Ringspun Cotton
- 30% Polyester

### Weight

- 280gsm



Oxford Navy  
Electric Orange

## JH013 Superbright Hoodie S–XXL

### Key Features

- Twin needle stitching detail
- Double fabric hood with contrast inner in electric colours

### Specification

- 80% Ringspun Cotton / 20% Polyester (Body)
- 80% Polyester / 20% Ringspun Cotton (hood lining)
- 75% Ringspun Cotton / 25% Polyester (Heather Grey)

### Weight

- 280gsm

- HEATHER GREY  
ELECTRIC PINK
- JET BLACK  
ELECTRIC GREEN
- HOT PINK  
ELECTRIC YELLOW
- PURPLE  
ELECTRIC GREEN
- SAPPHIRE BLUE  
ELECTRIC YELLOW
- OXFORD NAVY  
ELECTRIC ORANGE



HOOD  
DETAIL

# JH014

## Camo Hoodie

XS–XXL

### Key Features

- Twin needle stitching detail
- Classic all over camouflage print design
- Double fabric hood

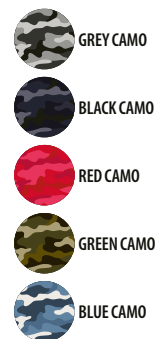
### Specification

- 70% Ringspun Cotton
- 30% Polyester

### Weight

- 280gsm

- Kids' sizes pg.98



For JH009  
Baseball hoodie  
see page 22

Green Camo

EVERYDAY  
MATCHING  
COMBOS

For JH074  
Tapered  
Track Pant  
see page 86



Heather Grey

JH015  
Hoodie Dress  
XS–XXL

- Key Features**
- Women's relaxed fit
  - Longline cut design
  - Double fabric hood

- Specification**
- 80% Ringspun Cotton / 20% Polyester
  - 75% Ringspun Cotton / 25%Polyester [Heather Grey]

**Weight**  
• 280gsm



HEATHER GREY



JET BLACK



Jet Black



Dusty Pink

- ARCTIC WHITE
- HEATHER GREY
- JET BLACK
- DUSTY PINK

JH016  
Women's  
Cropped Hoodie  
XXS–XL

- Key Features**
- Women's relaxed fit
  - Cropped cut with drop shoulder design
  - Twin needle stitching detail
  - Raw edge hem with cover stitching

- Specification**
- 80% Ringspun Cotton / 20% Polyester
  - 75% Ringspun Cotton / 25% Polyester [Heather Grey]

**Weight**  
• 280gsm



Arctic White



-  SURF PINK
-  SURF PURPLE
-  SURF YELLOW
-  SURF OCEAN
-  SURF BLUE

# JH017

## Surf Hoodie

XS-3XL

- Key Features**
- Twin needle stitching detail
  - Melange effect fabric
  - Relaxed fit
  - Double fabric hood

- Specification**
- 80% Ringspun Cotton
  - 20% Polyester

**Weight**

- 280gsm



-  HEATHER GREY STRIPE
-  NAVY STRIPE

# JH018

## Nautical Stripe Hoodie

XS-XXL

- Key Features**
- Stripe design
  - French terry
  - Relaxed fit
  - Double fabric hood

- Specification**
- 80% Ringspun Cotton / 20% Polyester (Navy Stripe)
  - 90% Cotton / 10% Viscose (Heather Grey Stripe)

**Weight**

- 280gsm



**JH019**  
**Distressed**  
**Hoodie**  
S-XXL

- Key Features**
- Distressed finish
  - French Terry
  - Double fabric hood

- Specification**
- 80% Ringspun Cotton / 20% Polyester (Jet Black)
  - 70% Cotton / 27% Polyester / 3% Viscose (Heather Grey)

**Weight**  
• 280gsm



- HEATHER GREY  
JET BLACK

- HEATHER GREY  
JET BLACK  
FIRE RED  
KELLY GREEN  
ROYAL BLUE  
CHARCOAL  
PURPLE  
RED HOT CHILLI  
BOTTLE GREEN  
NEW FRENCH NAVY



**JH020**  
**Street Hoodie**  
S-XXL

- Key Features**
- Heavyweight hoodie
  - Twin needle stitching detail
  - Three panel double fabric hood
  - Thumb holes in the cuffs
  - Hidden MP3/phone pocket inside kangaroo pouch pocket with small opening for ear phone cord feed

- Specification**
- 70% Ringspun Cotton / 30% Polyester
  - 52% Ringspun Cotton / 48% Polyester (Charcoal)
  - 65% Ringspun Cotton / 35% Polyester (Heather Grey)

**Weight**  
• 330gsm





# JH021

## Cross Neck Hoodie

S-XXL

### Key Features

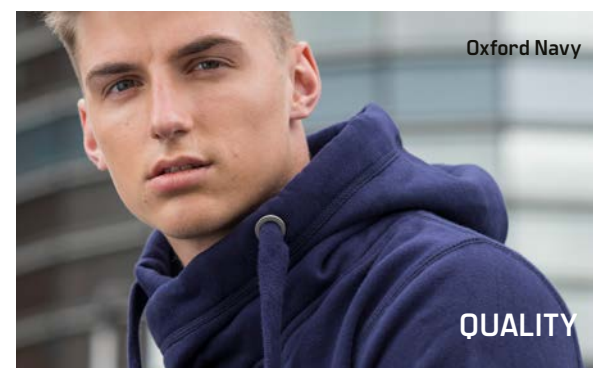
- Heavyweight hoodie
- Cross over neck detail
- Twin needle stitching detail
- Three panel double fabric hood
- Thumb holes in the cuffs

### Specification

- 70% Ringspun Cotton / 30% Polyester
- 52% Ringspun Cotton / 48% Polyester [Charcoal]
- 65% Ringspun Cotton / 35% Polyester [Heather Grey]
- 65% Ringspun Cotton / 35% Polyester [Black Smoke]

### Weight

• 330gsm



# MAKE A STATEMENT ON THE STREET





WASHED EFFECT

- WASHED ARCTIC WHITE
- WASHED CHARCOAL
- WASHED JET BLACK
- WASHED BURGUNDY
- WASHED FIRE RED
- WASHED PURPLE
- WASHED SAPPHIRE BLUE
- WASHED ROYAL BLUE
- WASHED NEW FRENCH NAVY



Washed Jet Black

# JH090

## Washed Hoodie

XS-3XL

- Key Features**
- Washed effect
  - Soft touch
  - Twin needle stitching detail
  - Double fabric hood

- Specification**
- 55% Ringspun Cotton
  - 45% Polyester

**Weight**

- 280gsm

- ARCTIC WHITE
- HEATHER GREY
- JET BLACK
- RED HOT CHILLI
- OXFORD NAVY



HOOD DETAIL

Red Hot Chilli

Navy



# JH100

## Chunky Hoodie

XS-XXL

- Key Features**
- Pull over hoodie
  - Side panels for stylish fit
  - Overlock stitching detail throughout
  - Double fabric hood with heather grey waffle fabric inner
  - Side pockets

- Specification**
- 80% Ringspun Cotton / 20% Polyester
  - 52% Ringspun Cotton / 48% Polyester (Charcoal)
  - 75% Ringspun Cotton / 25% Polyester (Heather Grey)

**Weight**

- 400gsm



Bottle Green



# JH101 Graduate Heavyweight Hoodie XS-3XL

## Key Features

- Heavyweight hoodie
- Twin needle stitching detail
- 3 panel fabric hood with single jersey fabric inner

## Specification

- 70% Ringspun Cotton / 30% Polyester
- 45% Ringspun Cotton / 55% Polyester (Charcoal)
- 65% Ringspun Cotton / 35% Polyester (Heather Grey)

## Weight

- 330gsm



Heather Grey

HOOD DETAIL



QUALITY

New French Navy  
Heather Grey



# JH103 Game Day Hoodie XS-3XL

## Key Features

- Heavyweight Hoodie
- Double fabric hood with single jersey contrast inner
- Twin needle stitching detail

## Specification

- 70% Ringspun Cotton / 30% Polyester
- 65% Ringspun Cotton / 35% Polyester (Heather Grey)

## Weight

- 330gsm

SWEATS

JH030 AWDIs Sweat **NEW COLOURS**

JH033 Baseball Sweat

JH035 Women's Cropped Sweat

JH036 Women's Fashion Sweat

JH038 Colour Block Sweat

JH046 Sophomore ¼ Zip Sweat

JH047 Fresher Full Zip Sweat

JH093 Washed Sweat

JH130 Graduate Heavyweight Sweat

42

44

45

46

47

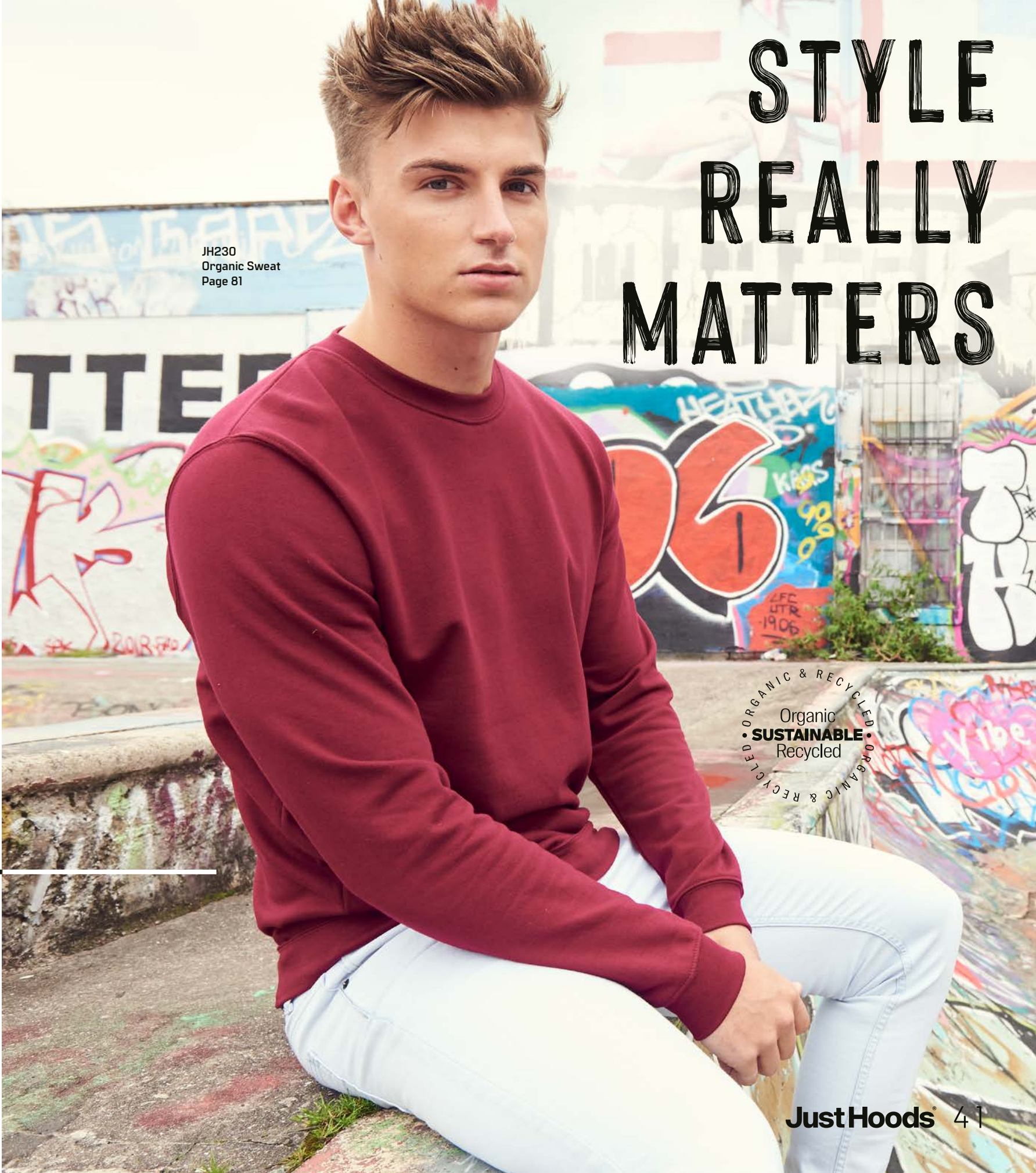
48

49

50

51

STYLE  
REALLY  
MATTERS



JH230  
Organic Sweat  
Page 81

ORGANIC & RECYCLED  
Organic  
• **SUSTAINABLE** •  
Recycled

All Just Hoods garments have tear away labels for easy re-branding and the fabrics across the range are ideal for print and embroidery.

# ON TREND SHADES



Sky Blue



Jade

## JH030 AWDis Sweat XS-5XL

### NEW COLOURS\*

\*All colours available in XS-XXL –available in 3XL and 5XL on selected colours.

#### Key Features

- 42 great colours
- Set in sleeves
- Stylish fit
- Twin needle stitching detail

#### Specification

- 80% Ringspun Cotton / 20% Polyester
- 52% Ringspun Cotton / 48% Polyester (Charcoal)
- 75% Ringspun Cotton / 25% Polyester (Heather Grey)
- 70% Ringspun Cotton / 30% Polyester (Black Smoke)

#### Weight

- 280gsm

- Kids sizes pg.99



Vanilla Milkshake



NEW  
COLOURS

Peppermint  
NEW COLOUR



# JH033

## Baseball Sweat

S-XXL

- Key Features**
- Twin needle stitching detail
  - Retro stylish fit
  - Contrast raglan sleeves

- Specification**
- 80% Ringspun Cotton / 20% Polyester
  - 52% Ringspun Cotton / 48% Polyester [Charcoal]
  - 75% Ringspun Cotton / 25% Polyester [Heather Grey]

**Weight**  
• 280gsm



# JH035

## Women's Cropped Sweat

XXS-XL

- Key Features**
- Women's relaxed fit
  - Crew neckline
  - Cropped cut with drop shoulder design
  - Twin needle stitching
  - Raw edge hem with cover stitching

- Specification**
- 80% Ringspun Cotton / 20% Polyester
  - 75% Ringspun Cotton / 25% Polyester [Heather Grey]

**Weight**  
• 280gsm



# JH036

## Women's Fashion Sweat

XS–XL

- Key Features**
- Twin needle stitching detail
  - Scooped rib crew neck
  - Women's fit with dropped shoulder



- Specification**
- 80% Ringspun Cotton / 20% Polyester
  - 52% Ringspun Cotton / 48% Polyester (Charcoal)
  - 75% Ringspun Cotton / 25% Polyester (Heather Grey)

**Weight**  
• 280gsm



# JH038

## Colour Block Sweat

XS–XXL

- Key Features**
- Crew neck sweat
  - Colour block design
  - Modern contrast panelling

- Specification**
- 80% Ringspun Cotton / 20% Polyester
  - 75% Ringspun Cotton / 25% Polyester (Heather Grey)

**Weight**  
• 280gsm

Fire Red



## JH046

### Sophomore 1/4 Zip Sweat S-XXL

- Key Features**
- 1/4 zip neck
  - Metal YKK zipper and puller

- Specification**
- 80% Ringspun Cotton / 20% Polyester
  - 52% Ringspun Cotton / 48% Polyester [Charcoal]
  - 75% Ringspun Cotton / 25% Polyester [Heather Grey]

**Weight**  
• 280gsm



ZIP DETAIL

Sapphire Blue



## JH047

### Fresher Full Zip Sweat S-XXL

- Key Features**
- Full covered zip
  - Front pockets
  - Metal YKK zipper and puller

- Specification**
- 80% Ringspun Cotton / 20% Polyester
  - 52% Ringspun Cotton / 48% Polyester [Charcoal]
  - 75% Ringspun Cotton / 25% Polyester [Heather Grey]

**Weight**  
• 280gsm

Washed  
Burgundy



# JH093

## Washed Sweat

XS-3XL

### Key Features

- Washed effect
- Soft touch
- Set in sleeves
- Twin needle stitching detail
- Stylish fit

### Specification

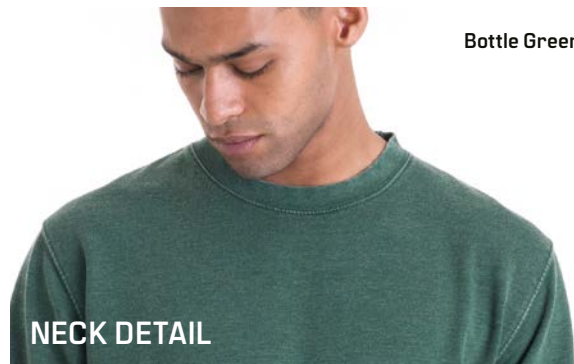
- 55% Ringspun Cotton
- 45% Polyester

### Weight

- 280gsm



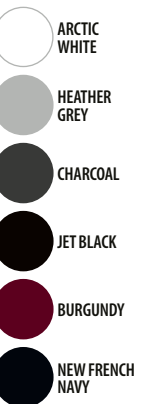
CUFF DETAIL



NECK DETAIL

Bottle Green

Arctic White



# JH130

## Graduate Heavyweight Sweat

XS-3XL

### Key Features

- Heavyweight sweat
- Twin needle stitching detail
- Raglan sleeves

### Specification

- 70% Ringspun Cotton / 30% Polyester
- 45% Ringspun Cotton / 55% Polyester (Charcoal)
- 65% Ringspun Cotton / 35% Polyester (Heather Grey)

### Weight

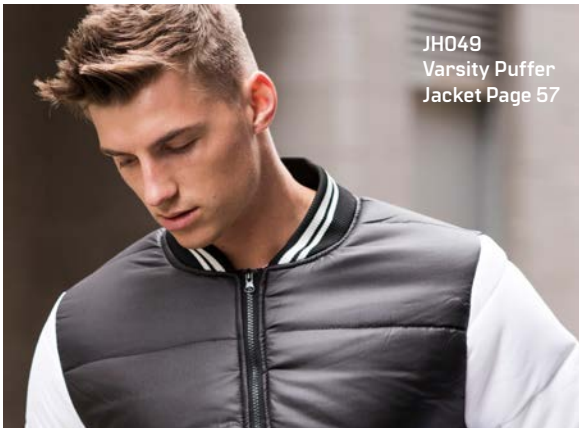
- 330gsm

JACKETS

JH041 College Jacket	54
JH043 Varsity Jacket	55
JH043F Women's Varsity Jacket	56
JH049 Varsity Puffer Jacket	57



JH043F  
Women's  
Varsity Jacket  
Page 56



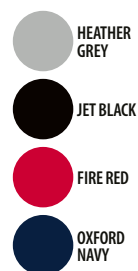
JH049  
Varsity Puffer  
Jacket Page 57

All Just Hoods garments have tear away labels for easy re-branding and the fabrics across the range are ideal for print and embroidery.



FASHION  
LAYERS

JH043  
Varsity Jacket  
Jet Black / Sun Yellow  
Page 55



COLLAR  
DETAIL

Oxford Navy

Fire Red

## JH041 College Jacket XS–XXL

### Key Features

- Knitted collar, cuffs and waistband with stripe details
- Welt pockets
- Hanging loop at back neck

### Specification

- 80% Ringspun Cotton / 20% Polyester
- 75% Ringspun Cotton / 25% Polyester (Heather Grey)

### Weight

- 280gsm



Purple  
Heather Grey

## JH043 Varsity Jacket XS–3XL\*

\*All colours available in XS-3XL –  
available in 5XL on selected colours

### Key Features

- Welt contrast pockets
- Taped back neck
- Hanging loop at back neck

### Specification

- 70% Ringspun Cotton / 30% Polyester
- 52% Ringspun Cotton / 48% Polyester (Charcoal)
- 65% Ringspun Cotton / 35% Polyester (Heather Grey)

### Weight

- 330gsm

- Women's sizes **pg.56**
- Kids sizes **pg.100**

Jet black  
Sun Yellow



- JET BLACK  
WHITE
- JET BLACK  
HEATHER GREY
- JET BLACK  
SUN YELLOW
- BABY PINK  
WHITE
- HOT PINK  
HEATHER GREY
- BURGUNDY  
HEATHER GREY



## JH043F Women's Varsity Jacket XS–XL

- Key Features**
- Women's fit
  - Welt contrast pockets
  - Hanging loop at back neck

- Specification**
- 70% Ringspun Cotton / 30% Polyester
  - 65% Ringspun Cotton / 35% Polyester (Heather Grey)

**Weight**  
330gsm

- Men's sizes **pg.55**
- Kids sizes **pg.100**



- JET BLACK  
WHITE
- NEW FRENCH NAVY  
WHITE

## JH049 Varsity Puffer Jacket XS–XXL

- Key Features**
- Contrast set in sleeves
  - Fully lined
  - Zipped side pockets

- Specification**
- Shell: 100% Polyester Pongee, A/C Coated 240T
  - Lining: 100% Polyester Taffeta 190T

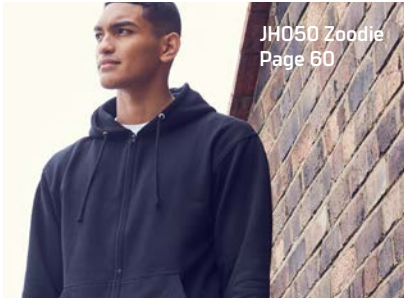
**Weight**  
• 80gsm

New French Navy  
White



ZOODIES

JH050 Zoodie	NEW COLOURS	60
JH051 Urban Varsity Zoodie		62
JH052 Chunky Zoodie		63
JH053 Varsity Zoodie		64
JH055 Women's Zoodie		65
JH057 Sleeveless Zoodie		66
JH058 Heather Zoodie		66
JH059 Retro Zoodie		67
JH063 Baseball Zoodie		68
JH065 Women's Fashion Cropped Zoodie	NEW STYLE	69
JH066 Sports Polyester Zoodie		70
JH068 Space Blend Zoodie		71
JH150 Graduate Heavyweight Zoodie		72



JH050 Zoodie  
Page 60



JH063  
Baseball Zoodie  
Page 68



JH058  
Heather Zoodie  
Page 66



JH051  
Urban  
Varsity  
Zoodie  
Page 62

All Just Hoods garments have tear away labels for easy re-branding and the fabrics across the range are ideal for print and embroidery.



EVERYDAY  
LIVING

NEW  
STYLE

JH065  
Women's Fashion  
Cropped Zoodie  
Page 69

	ARCTIC WHITE		ASH		HEATHER GREY	5XL
	STEEL GREY		CHARCOAL		STORM GREY	
	BLACK SMOKE		JET BLACK		DEEP BLACK NEW COLOUR	5XL
	HOT PINK		PURPLE		FIRE RED	
	BURGUNDY		RED HOT CHILLI		ORANGE CRUSH	
	MUSTARD		SUN YELLOW		KELLY GREEN	
	BOTTLE GREEN		FOREST GREEN		HAWAIIAN BLUE	
	SAPPHIRE BLUE		ROYAL BLUE		OXFORD NAVY	
	NEW FRENCH NAVY					5XL



# JH050

## Zoodie

### S–5XL\*

\*All colours available in S-3XL – available in 5XL on selected colours

**NEW COLOUR**

#### Key Features

- Self-fabric covered main zip
- Twin needle stitching detail
- Double fabric hood

#### Specification

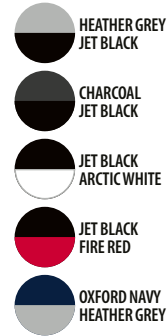
- 80% Ringspun Cotton/ 20% Polyester
- 52% Ringspun Cotton / 48% Polyester [Charcoal]
- 75% Ringspun Cotton / 25% Polyester [Heather Grey]

#### Weight

- 280gsm

• Kids sizes **pg.101**





## JH051 Urban Varsity Zoodie S–XXL

### Key Features

- 3 panel fabric hood with contrast single jersey fabric inner
- Metal YKK zipper and puller with chin protector

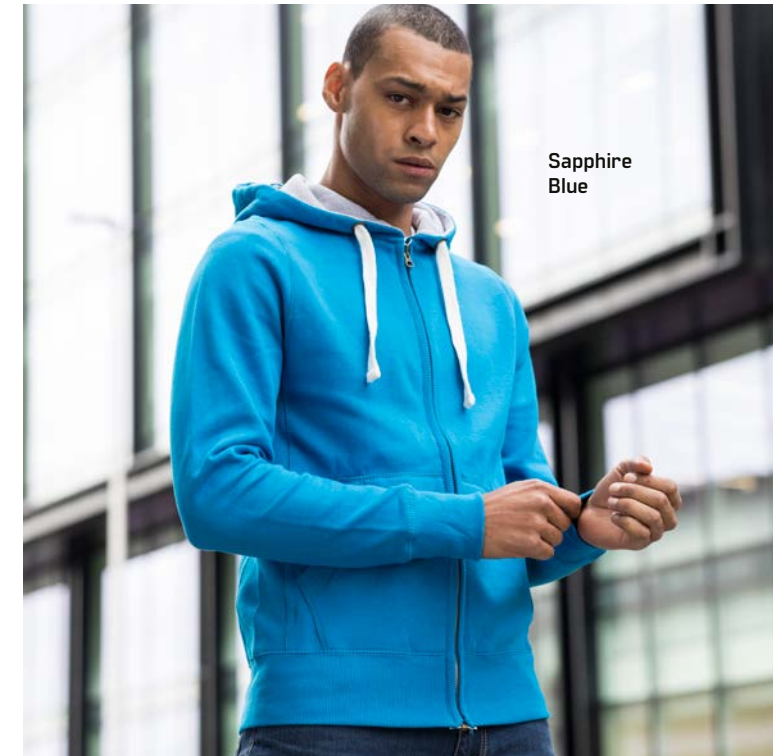
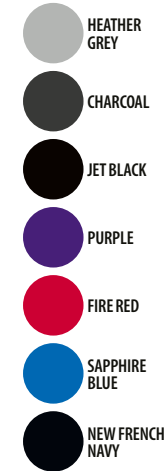
### Specification

- 70% Ringspun Cotton / 30% Polyester
- 52% Ringspun Cotton / 48% Polyester (Charcoal)
- 65% Ringspun Cotton / 35% Polyester (Heather Grey)

### Weight

- 330gsm

- Kids' sizes **pg.102**



## JH052 Chunky Zoodie S–XXL

### Key Features

- Side panels for stylish fit
- Brass zip covered with chunky rib detail
- Overlock stitching detail throughout
- Double fabric hood with heather grey waffle fabric inner

### Specification

- 80% Ringspun Cotton / 20% Polyester
- 52% Ringspun Cotton / 48% Polyester (Charcoal)
- 75% Ringspun Cotton / 25% Polyester (Heather Grey)

### Weight

- 400gsm



HOOD DETAIL



- HEATHER GREY FRENCH NAVY
- CHARCOAL JET BLACK
- JET BLACK HEATHER GREY
- JET BLACK FIRE RED
- JET BLACK ORANGE CRUSH
- JET BLACK GOLD
- PURPLE SUN YELLOW
- BURGUNDY CHARCOAL
- FIRE RED ARCTIC WHITE
- FIRE RED JET BLACK
- KELLY GREEN ARCTIC WHITE
- SAPPHIRE BLUE HEATHER GREY
- ROYAL BLUE ARCTIC WHITE
- NEW FRENCH NAVY HEATHER GREY
- NEW FRENCH NAVY FIRE RED
- NEW FRENCH NAVY SKY BLUE

Heather Grey



- ARCTIC WHITE
- HEATHER GREY
- JET BLACK
- HOT PINK
- PURPLE
- FIRE RED
- SAPPHIRE BLUE
- NEW FRENCH NAVY

# JH053

## Varsity Zoodie

S-XXL

### Key Features

- Twin needle stitching detail
- Double fabric hood with contrast inner

### Specification

- 80% Ringspun Cotton/ 20% Polyester
- 52% Ringspun Cotton/ 48% Polyester (Charcoal)
- 75% Ringspun Cotton/25% Polyester (Heather Grey)

### Weight

- 280gsm

- Kids' sizes **pg.103**



Burgundy Charcoal

# JH055

## Women's Zoodie

XS-XL

### Key Features

- Women's fit
- Covered main plastic zip
- Twin needle stitching detail
- Double fabric hood

### Specification

- 80% Ringspun Cotton / 20% Polyester
- 75% Ringspun Cotton / 25% Polyester (Heather Grey)

### Weight

- 280gsm

Oxford Navy



# JH057

## Sleeveless Zoodie

S-XXL

### Key Features

- Sleeveless zipped hoodie with metal YKK zip
- Twin needle stitching detail
- Double fabric hood

### Specification

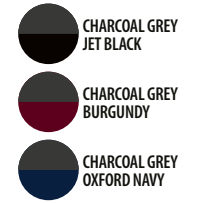
- 80% Ringspun Cotton/20% Polyester
- 52% Ringspun Cotton/48% Polyester [Charcoal]
- 75% Ringspun Cotton/25% Polyester [Heather Grey]

### Weight

- 280gsm



Charcoal Grey  
Burgundy



CONTRAST DETAILS

# JH058

## Heather Zoodie

XS-XXL

### Key Features

- Soft feel lightweight fabric
- Slim fit
- Twin needle stitching detail

### Specification

- 52% Ringspun Cotton / 48% Polyester

### Weight

- 225gsm



Grey Heather

# JH059

## Retro Zoodie

XS-XXL

### Key Features

- Full zip hoodie with metal YKK zip
- Slim fit
- Twin needle stitching detail
- Double fabric hood

### Specification

- 80% Ringspun Cotton / 20% Polyester
- 52% Ringspun Cotton / 48% Polyester [Charcoal]

### Weight

- 280gsm

- HEATHER GREY  
JET BLACK
- CHARCOAL  
JET BLACK
- JET BLACK  
HEATHER GREY
- JET BLACK  
FIRE RED
- OXFORD NAVY  
HEATHER GREY



# JH063

## Baseball Zoodie

### S-XXL

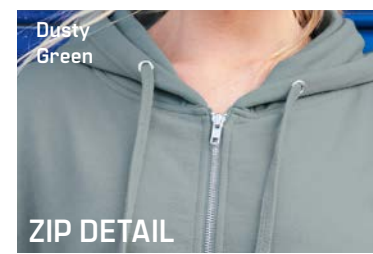
- Key Features**
- Twin needle stitching detail
  - Double fabric hood
  - YKK Plastic zip

- Specification**
- 80% Ringspun Cotton / 20% Polyester
  - 52% Ringspun Cotton / 48% Polyester [Charcoal]
  - 75% Ringspun Cotton / 25% Polyester [Heather Grey]

**Weight**  
• 280gsm



- ARCTIC  
WHITE
- HEATHER  
GREY
- DEEP BLACK
- DUSTY PINK
- DUSTY GREEN



# JH065

## Women's Fashion Cropped Zoodie

### XXS-XL

**NEW STYLE**

- Key Features**
- Women's relaxed fit
  - Cropped cut with drop shoulder design
  - Full front Metal YKK Zip
  - Twin needle stitching detail

- Specification**
- 80% Ringspun Cotton / 20% Polyester
  - 75% Ringspun Cotton / 25% Polyester [Heather Grey]

**Weight**  
• 280gsm

- STEEL GREY  
JET BLACK
- JET BLACK  
ARCTIC WHITE
- JET BLACK  
FIRE RED
- FIRE RED  
JET BLACK
- ROYAL BLUE  
JET BLACK
- OXFORD NAVY  
ARCTIC WHITE



Fire Red  
Jet Black

HOOD DETAIL

Oxford Navy  
Arctic White



## JH066

### Sports Polyester Zoodie

S-3XL

#### Key Features

- Sporty fit
- Full zip hoodie with contrast plastic zip
- Twin needle stitching detail
  - Raglan sleeves with contrast panel
- Three panel hood with contrast inner

#### Specification

- 100% Polyester

#### Weight

- 200gsm



Space Grey  
White

- SPACE GREY  
WHITE
- SPACE NAVY  
WHITE

## JH068

### Space Blend Zoodie

XS-XXL

#### Key Features

- Full zip front zoodie with plastic zip
  - Modern fit
  - Heavyweight
  - Double fabric hood
- All over marl effect fabric

#### Specification

- 60% Polyester / 40% Cotton

#### Weight

- 300gsm

- HEATHER GREY
- CHARCOAL
- JET BLACK
- BURGUNDY
- ROYAL BLUE
- NEW FRENCH NAVY



Heather Grey



Royal Blue

DRAWCORD  
DETAIL

# JH150

## Graduate

### Heavyweight Zoodie

XS–3XL

Key Features

- 3 panel fabric hood with single jersey fabric inner
- Heavyweight zoodie
- Plastic YKK zipper and puller with chin protector

Specification

- 70% Ringspun Cotton / 30% Polyester
- 45% Ringspun Cotton / 55% Polyester (Charcoal)
- 65% Ringspun Cotton / 35% Polyester (Heather Grey)

Weight

- 330gsm



Heather Grey

ORGANIC

JH201 Organic Hoodie	NEW STYLE	77
JH0201J Kids Organic Hoodie	NEW STYLE	78
JH230 Organic Sweat	NEW STYLE	81
JH250 Organic Zoodie	NEW STYLE	82



THE ORGANIC + RECYCLED COLLECTION

The brand new organic and recycled collection has launched this year for customers looking to shop for environmentally conscious clothing with style. The new sustainable range is Just Hoods first step in helping to make a big difference to do better, to be better and to inspire change – change you can wear.



ORGANIC & RECYCLED  
Organic  
• SUSTAINABLE •  
Recycled  
ORGANIC & RECYCLED

JH201 Organic Hoodie  
Page 77

STYLISH +  
SUSTAINABLE



## JH201 Organic Hoodie XS-3XL NEW STYLE

### Key Features

- 12 great colours
- Twin needle stitching detail
- Double fabric hood
- Kangaroo pouch pocket

### Specification

- 80% Organic Cotton / 20% Recycled Polyester
- 75% Organic Cotton / 25% Recycled Polyester (Heather Grey)

### Weight

- 280gsm



# COOL TO BE CONSCIOUS



## JH201J Kids Organic Hoodie XXS–XL NEW STYLE

### Key Features

- Twin needle stitching detail
- Double fabric hood
- No drawcords – to comply with EU regulation
- Kangaroo pouch pocket

### Specification

- 80% Organic Cotton / 20% Recycled Polyester
- 75% Organic Cotton / 25% Recycled Polyester (Heather Grey)

### Weight

- 280gsm

- Adults sizes **pg.77**



- ARCTIC WHITE
- HEATHER GREY
- BABY PINK
- DEEP BLACK
- BURGUNDY
- FIRE RED
- ROYAL BLUE
- NEW FRENCH NAVY



NEW  
STYLE



- ARCTIC WHITE
- HEATHER GREY
- CHARCOAL
- DEEP BLACK
- BABY PINK
- BURGUNDY
- FIRE RED
- BOTTLE GREEN
- ROYAL BLUE
- NEW FRENCH NAVY



## JH230

### Organic Sweat

XS–XXL

**NEW STYLE**

#### Key Features

- Crew neck sweat
- Set in sleeves
- Taped neck
- Stylish fit

#### Specification

- 80% Organic Cotton / 20% Recycled Polyester
- 75% Organic Cotton / 25% Recycled Polyester (Heather Grey)

#### Weight

- 280gsm





ARCTIC  
WHITE



HEATHER  
GREY



CHARCOAL



DEEP BLACK



BURGUNDY



NEW FRENCH  
NAVY



# JH250

## Organic Zoodie

XS–XXL

**NEW STYLE**

### Key Features

- Self-fabric covered main zip
- Twin needle stitching detail
  - Double fabric hood
- Self-coloured cords

### Specification

- 80% Organic Cotton / 20% Recycled Polyester
- 75% Organic Cotton / 25% Recycled Polyester (Heather Grey)

### Weight

- 280gsm

PANTS & SHORTS

JH074 Tapered Track Pant	86
JH077 Women's Tapered Track Pant	87
JH072 College Cuffed Jogpant <b>NEW COLOUR</b>	88
JH080 Campus Jogpants	89



JH077 Women's Tapered Track  
Pant Page 87



JH080  
Campus Shorts  
Page 89



JH072 College Cuffed Jogpants  
Page 88

All Just Hoods garments have  
tear away labels for easy  
re-branding and the fabrics  
across the range are ideal  
for print and embroidery.



COMFORT  
IS KEY

JH074 Tapered  
Track Pant  
Page 86

# JH074

## Tapered Track Pant

### S-XXL

#### Key Features

- Modern tapered slim fit
- Front pockets
- Elasticated waistband with outer drawcords

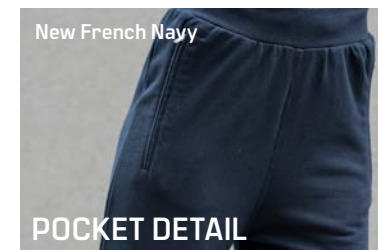
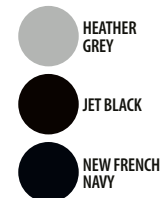
#### Specification

- 80% Ringspun Cotton / 20% Polyester
- 52% Ringspun Cotton/48% Polyester [Charcoal]
- 75% Ringspun Cotton / 25% Polyester [Heather Grey]
- 70% Ringspun Cotton / 30% Polyester [Green Camo]

#### Weight

- 280gsm

- Kids' sizes pg.105



# JH077

## Women's Tapered Track Pant

### XS-XL

#### Key Features

- Modern tapered slim fit
- Front pockets with YKK zips
- Elasticated waistband with outer drawcords

#### Specification

- 96% Ringspun Cotton / 4% Elastane
- 85% Ringspun Cotton / 11% Polyester / 4% Elastane [Heather Grey]

#### Weight

- 280gsm

# COMFORTABLE IS COOL

- HEATHER GREY
- CHARCOAL
- JET BLACK
- DEEP BLACK  
NEW COLOUR
- NEW FRENCH  
NAVY



## JH072 College Cuffed Jogpants S-XXL NEW COLOUR

### Key Features

- Elasticated waist with white inner drawcords
- Side pockets

### Specification

- 80% Ringspun Cotton / 20% Polyester
- 52% Ringspun Cotton / 48% Polyester (Charcoal)
- 75% Ringspun Cotton / 25% Polyester (Heather Grey)

### Weight

- 280gsm

• Kids' sizes pg.104



- HEATHER GREY
- CHARCOAL
- JET BLACK
- BURGUNDY
- NEW FRENCH NAVY



## JH080 Campus Shorts S-XXL

### Key Features

- Heavyweight shorts
- Side pockets
- Single back patch pocket
- Deep rib waistband with flat cream drawcords

### Specification

- 70% Ringspun Cotton / 30% Polyester
- 52% Ringspun Cotton / 48% Polyester (Charcoal)
- 65% Ringspun Cotton / 35% Polyester (Heather Grey)

### Weight

- 330gsm



KIDS

JH001J Kids Hoodie <b>NEW COLOURS</b>	92
JH003J Kids Varsity Hoodie	94
JH004J Kids Electric Hoodie	95
JH006J Kids Sports Polyester Hoodie	96
JH009J Kids Baseball Hoodie	97
JH014J Kids Camo Hoodie	98
JH030J Kids AWDIs Sweat	99
JH043J Kids Varsity Jacket	100
JH050J Kids Zoodie <b>NEW COLOURS</b>	101
JH051J Kids Urban Varsity Zoodie	102
JH053J Kids Varsity Zoodie	103
JH072J Kids Cuffed Jogpants	104
JH074J Kids Tapered Track Pant	105



JH030J Kids  
AWDis Sweat  
Page 99



JH053J Kids  
Varsity Zoodie  
Page 103



JH001J Kids Hoodie  
Page 92

STEP OUT  
IN STYLE

All Just Hoods garments have tear away labels for easy re-branding and the fabrics across the range are ideal for print and embroidery.



# JH001J

## Kids Hoodie

### XXS–XL

#### NEW COLOURS

#### Key Features

- Double fabric hood
- Twin needle stitching detail
- No drawcords to comply to EU regulation

#### Specification

- 80% Ringspun Cotton / 20% Polyester
- 52% Ringspun Cotton / 48% Polyester [Charcoal]
- 75% Ringspun Cotton / 25% Polyester [Heather Grey]

#### Weight

- 280gsm

# JH003J

## Kids Varsity Hoodie

XS–XL

### Key Features

- Twin needle stitching detail
- Double fabric hood with contrast inner
- No drawcords – to comply with EU regulation

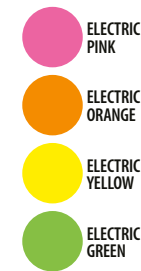
### Specification

- 80% Ringspun Cotton / 20% Polyester
- 52% Ringspun Cotton / 48% Polyester [Charcoal]
- 75% Ringspun Cotton / 25% Polyester [Heather Grey]

### Weight

- 280gsm

- Mens sizes **pg.16**



# JH004J

## Kids Electric Hoodie

XS–XL

### Key Features

- Vibrant eye-catching colours
- Twin needle stitching detail
- No drawcords – to comply with EU regulation

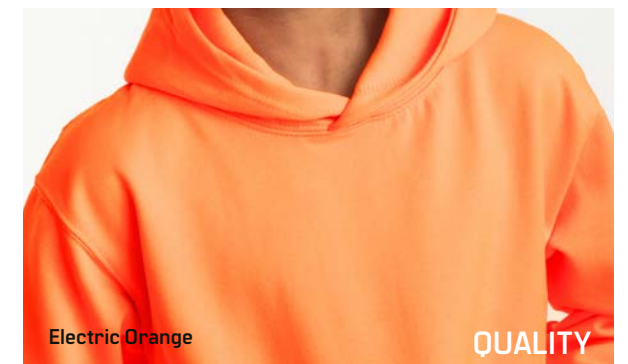
### Specification

- 85% Polyester
- 15% Ringspun Cotton

### Weight

- 280gsm

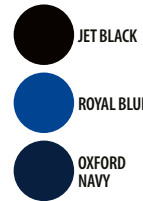
- Adults sizes **pg.18**





Oxford Navy

Royal Blue



Royal Blue

## JH006J Kids Sports Polyester Hoodie XS–XL

- Key Features**
- Sporty fit
  - Twin needle stitching detail
  - Three panel double fabric hood
  - Straight hem
  - No drawcords – to comply with EU regulation

- Specification**
- 100% Polyester
- Weight**
- 200gsm
- Adults sizes **pg.20**

## JH009J Kids Baseball Hoodie XS–XL

- Key Features**
- Twin needle stitching detail
  - Contrast raglan sleeves
  - Double fabric hood
  - No drawcords – to comply with EU regulation

- Specification**
- 80% Ringspun Cotton / 20% Polyester
  - 52% Ringspun Cotton / 48% Polyester [Charcoal]
  - 75% Ringspun Cotton / 25% Polyester [Heather Grey]

- Weight**
- 280gsm

- Adults sizes **pg.22**



Oxford Navy/  
Heather Grey



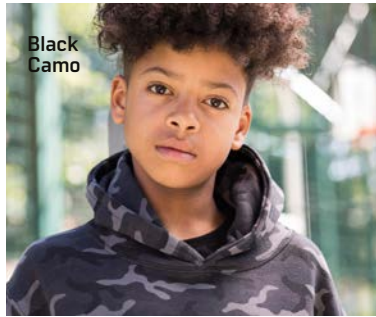
Jet Black/  
Fire Red





Black Camo

- BLACK CAMO
- GREEN CAMO



Black Camo

- |              |                 |               |
|--------------|-----------------|---------------|
| ARCTIC WHITE | ASH             | HEATHER GREY  |
| CHARCOAL     | STORM GREY      | JET BLACK     |
| DEEP BLACK   | BABY PINK       | HOT PINK      |
| PURPLE       | PLUM            | BURGUNDY      |
| FIRE RED     | RED HOT CHILLI  | ORANGE CRUSH  |
| SUN YELLOW   | LIME GREEN      | KELLY GREEN   |
| BOTTLE GREEN | FOREST GREEN    | JADE          |
| SKY BLUE     | ROYAL BLUE      | SAPPHIRE BLUE |
| OXFORD NAVY  | NEW FRENCH NAVY |               |



Sky Blue



Burgundy

JH014J  
Kids Camo Hoodie  
XS–XL

- Key Features**
- Twin needle stitching detail
  - Classic all over camouflage print design
  - Double fabric hood
  - No drawcords – to comply with EU regulation

- Specification**
- 70% Ringspun Cotton / 30% Polyester
- Weight**
- 280gsm
- Adults sizes **pg.26**

JH030J  
Kids AWDIs Sweat  
XS–XL

- Key Features**
- 26 great colours
  - Set in sleeves
  - Stylish fit

- Specification**
- 80% Ringspun Cotton / 20% Polyester
  - 52% Ringspun Cotton / 48% Polyester [Charcoal]
  - 75% Ringspun Cotton / 25% Polyester [Heather Grey]

- Weight**
- 280gsm

- Adults sizes **pg.42**

- HEATHER GREY WHITE
- JET BLACK WHITE
- JET BLACK HEATHER GREY
- JET BLACK FIRE RED
- JET BLACK SUN YELLOW
- HOT PINK WHITE
- PURPLE WHITE
- PURPLE HEATHER GREY
- BURGUNDY HEATHER GREY
- FIRE RED WHITE
- KELLY GREEN WHITE
- SAPPHIRE BLUE HEATHER GREY
- ROYAL BLUE WHITE
- OXFORD NAVY WHITE
- OXFORD NAVY HEATHER GREY
- OXFORD NAVY BURGUNDY



# JH043J

## Kids Varsity Jacket

XS–XL

- Key Features**
- Welt contrast pockets
  - Taped back neck
  - Hanging loop at back neck

- Specification**
- 70% Ringspun Cotton / 30% Polyester
  - 65% Ringspun Cotton / 35% Polyester (Heather Grey)
- Weight**
- 330gsm
- Mens sizes **pg.55**
- Women's sizes **pg.56**

- ARCTIC WHITE
- DEEP BLACK NEW COLOUR
- BABY PINK
- PURPLE
- FIRE RED
- HAWAIIAN BLUE
- SAPPHIRE BLUE
- NEW FRENCH NAVY
- HEATHER GREY
- JET BLACK
- HOT PINK
- BURGUNDY
- KELLY GREEN
- ROYAL BLUE
- OXFORD NAVY



# JH050J

## Kids Zoodie

XS–XL

**NEW COLOUR**

- Key Features**
- Self-fabric covered main zip
  - Twin needle stitching detail
  - Double fabric hood
  - No drawcords – to comply with EU regulation
- Specification**
- 80% Ringspun Cotton / 20% Polyester
  - 75% Ringspun Cotton / 25% Polyester (Heather Grey)

**Weight**

- 280gsm

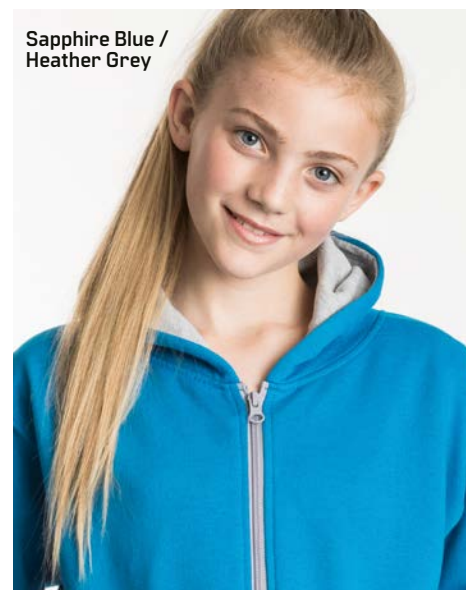
• Adults sizes **pg.60**





Jet Black /  
Fire Red

Heather  
Grey/  
Jet Black



Sapphire Blue /  
Heather Grey

New French Navy/  
Heather Grey



## JH051J Kids Urban Varsity Zoodie XS–XL

### Key Features

- 3 panel fabric hood with contrast single jersey fabric inner
- Metal YKK zipper and puller with chin protector
- No drawcords – to comply with EU regulation

### Specification

- 70% Ringspun Cotton / 30% Polyester
- 65% Ringspun Cotton / 35% Polyester (Heather Grey)

### Weight

- 330gsm

• Adults sizes **pg.62**

## JH053J Kids Varsity Zoodie XS–XL

### Key Features

- Full zip hoodie with contrast YKK plastic zip
  - Twin needle stitching detail
- Double fabric hood with contrast inner
- No drawcords – to comply with EU regulation

### Specification

- 80% Ringspun Cotton / 20% Polyester
  - 52% Ringspun Cotton / 48% Polyester (Charcoal)
  - 75% Ringspun Cotton / 25% Polyester (Heather Grey)

### Weight

- 280gsm

• Adults sizes **pg.64**

# JH072J

## Kids Cuffed Jogpants

### S–XL

#### Key Features

- Side pockets
- Cuffed leg opening
- 1x1 rib waistband
- No drawcords – to comply with EU regulation

#### Specification

- 80% Ringspun Cotton / 20% Polyester
- 75% Ringspun Cotton / 25% Polyester (Heather Grey)

#### Weight

- 280gsm

- Adults sizes **pg.88**



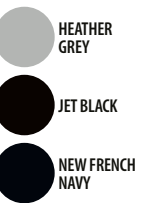
New French Navy



WAIST DETAIL



Heather Grey



# JH074J

## Kids Tapered Track Pant

### XS–XL

#### Key Features

- Side pockets
- Tapered leg with cuffs
- 1x1 rib waistband
- No drawcords – to comply with EU regulation

#### Specification

- 80% Ringspun Cotton / 20% Polyester
- 75% Ringspun Cotton / 25% Polyester (Heather Grey)

#### Weight

- 280gsm

- Adults sizes **pg.86**

# CORE COLOUR GUIDE

[illegible][illegible]

# CONTRAST COLOUR GUIDE

## JH003 VARSITY HOODIE / JH003J KIDS VARSITY HOODIE\*

 ARCTIC WHITE FRENCH NAVY	 ARCTIC WHITE HOT PINK	 BABY PINK* ARCTIC WHITE	 BOTTLE GREEN FIRE RED	 BURGUNDY* CHARCOAL	 BURGUNDY* GOLD	 BURGUNDY OXFORD NAVY	 CANDYFLOSS PINK* HOT PINK	 CHARCOAL BURGUNDY	 CHARCOAL HEATHER GREY	 CHARCOAL JET BLACK
 CHARCOAL ORANGE CRUSH	 DESERT SAND VANILLA MILKSHAKE	 FIRE RED ARCTIC WHITE	 FIRE RED* JET BLACK	 FOREST GREEN* GOLD	 HAWAIIAN BLUE OXFORD NAVY	 HEATHER GREY* FIRE RED	 HEATHER GREY* FRENCH NAVY	 HEATHER GREY JET BLACK	 HEATHER GREY SAPPHIRE BLUE	 HOT CHOCOLATE VANILLA MILKSHAKE
 HOT PINK* FRENCH NAVY	 HOT PINK HEATHER GREY	 JET BLACK ARCTIC WHITE	 JET BLACK* FIRE RED	 JET BLACK* GOLD	 JET BLACK* HEATHER GREY	 JET BLACK* HOT PINK	 JET BLACK KELLY GREEN	 JET BLACK* ORANGE CRUSH	 JET BLACK PURPLE	 JET BLACK SAPPHIRE BLUE
 JET BLACK SUN YELLOW	 KELLY GREEN* ARCTIC WHITE	 KELLY GREEN SUN YELLOW	 LIME GREEN MAGENTA MAGIC	 NEW FRENCH NAVY* FIRE RED	 NEW FRENCH NAVY* HEATHER GREY	 NEW FRENCH NAVY* SKY BLUE	 OXFORD NAVY CANDYFLOSS PINK	 OXFORD NAVY HAWAIIAN BLUE	 OXFORD NAVY SUN YELLOW	 PURPLE HEATHER GREY
 PURPLE* SUN YELLOW	 ROYAL BLUE ARCTIC WHITE	 ROYAL BLUE SUN YELLOW	 SAPPHIRE BLUE* HEATHER GREY	 SAPPHIRE BLUE LIME GREEN	 SAPPHIRE BLUE ORANGE CRUSH	 SKY BLUE ARCTIC WHITE	 SUN YELLOW FIRE RED			



## JH009 BASEBALL HOODIE / JH009J KIDS BASEBALL HOODIE\*

 ARCTIC WHITE JET BLACK	 BABY PINK HEATHER GREY	 BURGUNDY CHARCOAL	 CHARCOAL HEATHER GREY	 CHARCOAL* JET BLACK	 HEATHER GREY* JET BLACK	 JET BLACK* FIRE RED
 JET BLACK GOLD	 JET BLACK SAPPHIRE BLUE	 OXFORD NAVY BURGUNDY	 OXFORD NAVY* HEATHER GREY	 SOLID BLACK BLACK CAMO	 SOLID GREEN GREEN CAMO	

## JH018 NAUTICAL STRIPE HOODIE

 HEATHER GREY STRIPE	 NAVY STRIPE
--	--

## JH038 COLOUR BLOCK SWEAT

 HEATHER GREY DEEP BLACK	 HEATHER GREY NEW FRENCH NAVY
--	--







## JH041 COLLEGE JACKET

 FIRE RED	 HEATHER GREY	 JET BLACK	 OXFORD NAVY
---	---	--	--

## JH013 SUPERBRIGHT HOODIE

 HEATHER GREY ELECTRIC PINK	 HOT PINK ELECTRIC YELLOW	 JET BLACK ELECTRIC GREEN
 OXFORD NAVY ELECTRIC ORANGE	 PURPLE ELECTRIC GREEN	 SAPPHIRE BLUE ELECTRIC YELLOW

## JH033 BASEBALL SWEAT

 ARCTIC WHITE JET BLACK	 BURGUNDY CHARCOAL	 CHARCOAL JET BLACK	 HEATHER GREY JET BLACK	 JET BLACK FIRE RED	 OXFORD NAVY HEATHER GREY
--	---	---	--	--	--

## JH043 VARSITY JACKET / JH043J KIDS VARSITY JACKET\*

 BURGUNDY* HEATHER GREY	 CHARCOAL HEATHER GREY	 FIRE RED* WHITE	 HEATHER GREY WHITE	 HOT PINK* WHITE	 JET BLACK CHARCOAL	 JET BLACK* FIRE RED	 JET BLACK* HEATHER GREY	 JET BLACK HOT PINK	 JET BLACK ORANGE CRUSH	 JET BLACK* SUN YELLOW
 JET BLACK* WHITE	 KELLY GREEN* WHITE	 OXFORD NAVY* BURGUNDY	 OXFORD NAVY* HEATHER GREY	 OXFORD NAVY* WHITE	 PURPLE* HEATHER GREY	 PURPLE* WHITE	 ROYAL BLUE* WHITE	 SAPPHIRE BLUE* HEATHER GREY		




## JH043F WOMEN'S VARSITY JACKET

 BABY PINK WHITE	 BURGUNDY HEATHER GREY	 HOT PINK HEATHER GREY	 JET BLACK HEATHER GREY	 JET BLACK SUN YELLOW	 JET BLACK WHITE
---	---	---	--	--	---













## JH049 VARSITY PUFFER JACKET

 JET BLACK WHITE	 NEW FRENCH NAVY WHITE
---	---

## JH051 URBAN VARSITY ZOODIE / JH051J KIDS URBAN VARSITY ZOODIE\*

 CHARCOAL JET BLACK	 HEATHER GREY JET BLACK	 JET BLACK ARCTIC WHITE	 JET BLACK FIRE RED	 OXFORD NAVY HEATHER GREY
--	--	--	--	--





## JH053 VARSITY ZOODIE / JH051J KIDS VARSITY ZOODIE\*

 BURGUNDY CHARCOAL	 CHARCOAL JET BLACK	 FIRE RED ARCTIC WHITE	 FIRE RED JET BLACK	 HEATHER GREY* FRENCH NAVY	 JET BLACK* FIRE RED	 JET BLACK HEATHER GREY	 JET BLACK GOLD	 JET BLACK ORANGE CRUSH	 KELLY GREEN ARCTIC WHITE	 NEW FRENCH NAVY* FIRE RED
 NEW FRENCH NAVY* HEATHER GREY	 NEW FRENCH NAVY SKY BLUE	 PURPLE* SUN YELLOW	 ROYAL BLUE ARCTIC WHITE	 SAPPHIRE BLUE* HEATHER GREY						

## JH059 RETRO ZOODIE

 CHARCOAL GREY BURGUNDY	 CHARCOAL GREY JET BLACK	 CHARCOAL GREY OXFORD NAVY
--	---	---

## JH063 BASEBALL ZOODIE

 CHARCOAL JET BLACK	 HEATHER GREY JET BLACK	 JET BLACK FIRE RED	 JET BLACK HEATHER GREY	 OXFORD NAVY HEATHER GREY
--	--	--	--	--

## JH066 SPORTS POLYESTER ZOODIE

 FIRE RED JET BLACK	 JET BLACK ARCTIC WHITE	 JET BLACK FIRE RED	 OXFORD NAVY ARCTIC WHITE	 ROYAL BLUE JET BLACK	 STEEL GREY JET BLACK
--	--	--	--	--	--

## JH103 GAME DAY HOODIE

 HEATHER GREY DEEP BLACK	 DEEP BLACK HEATHER GREY	 NEW FRENCH NAVY HEATHER GREY
---	---	--

# OUR FABRICS

## COLLEGE FABRIC

80% RINGSPUN COTTON  
20% POLYESTER

280GSM  
MIDWEIGHT



## GRADUATE FABRIC

70% RINGSPUN COTTON  
30% POLYESTER

330GSM  
HEAVYWEIGHT



## STREET FABRIC

70% RINGSPUN COTTON  
30% POLYESTER

330GSM  
HEAVYWEIGHT



## SPORTS FABRIC

100% POLYESTER

200GSM  
MIDWEIGHT



## SURF FABRIC

80% RINGSPUN COTTON  
20% POLYESTER

280GSM  
MIDWEIGHT



## HEATHER FABRIC

52% RINGSPUN COTTON  
48% POLYESTER

225GSM  
LIGHTWEIGHT



## COSMIC FABRIC

70% RINGSPUN COTTON  
30% POLYESTER

280GSM  
MIDWEIGHT



## SPACE FABRIC

60% RINGSPUN COTTON  
40% POLYESTER

300GSM  
HEAVYWEIGHT



## WASHED FABRIC

55% RINGSPUN COTTON  
45% POLYESTER

280GSM  
MIDWEIGHT



## ELECTRIC FABRIC

85% RINGSPUN COTTON  
15% POLYESTER

280GSM  
MIDWEIGHT



## SUPASOFT FABRIC

80% RINGSPUN COTTON  
20% POLYESTER

280GSM  
SUPASOFT PEACHED FEEL  
COTTON FACED FABRIC  
MIDWEIGHT



## CHUNKY FABRIC

80% RINGSPUN COTTON  
20% POLYESTER

400GSM  
MIDWEIGHT



## ORGANIC FABRIC

80% ORGANIC COTTON  
20% RECYCLED POLYESTER

280GSM  
MIDWEIGHT



## FRENCH TERRY FABRIC

80% RINGSPUN COTTON  
20% POLYESTER

280GSM  
MIDWEIGHT



# PMS COLOUR GUIDE

 NEW FRENCH NAVY PMS 5395C	 OXFORD NAVY PMS 533C	 NAVY SMOKE PMS 533C	 DENIM BLUE PMS 534C	 INK BLUE PMS 19-4033 TCX	 ROYAL BLUE PMS 661C	 SAPPHIRE BLUE PMS 300C	 TROPICAL BLUE PMS 285C
 AIRFORCE BLUE PMS 5405C	 DUSTY BLUE PMS 17-4021 TCX	 CORNFLOWER BLUE PMS 659C	 SKY BLUE PMS 644C	 HAWAIIAN BLUE PMS 2995C	 TURQUOISE SURF PMS 311C	 DEEP SEA BLUE PMS 3035C	 JADE PMS 329C
 PEPPERMINT PMS 3242C	 FOREST GREEN PMS 627C	 BOTTLE GREEN PMS 564C	 COMBAT GREEN PMS 19-0509 TCX	 OLIVE GREEN PMS 448C	 MOSS GREEN PMS 661C	 DUSTY GREEN NEW PMS 16-5804 TCX	 KELLY GREEN PMS 347C
 SPRING GREEN PMS 339C	 ALIEN GREEN PMS 15-0545TCX	 LIME GREEN PMS 15-0146TCX	 APPLE GREEN PMS 358C	 HOT CHOCOLATE PMS 440C	 CARAMEL TOFFEE PMS 18-1031 TCX	 MOCHA BROWN PMS 7531CP	 DESERT SAND PMS 7502C
 NUDE PMS 4665C	 PEACH PERFECT PMS 489C	 VANILLA MILKSHAKE PMS 7499C	 SHERBET LEMON PMS 120C	 SUN YELLOW PMS 109C	 MUSTARD PMS 1245C	 GOLD PMS 136C	 ORANGE CRUSH PMS 1505C
 BURNT ORANGE PMS 173C	 SUNSET ORANGE PMS 179C	 RED HOT CHILLI PMS 1945C	 BRICK RED PMS 202C	 RED RUST NEW PMS 19-1334 TCX	 FIRE RED PMS 200C	 BURGUNDY PMS 7421C	 BURGUNDY SMOKE PMS 7428C
 PLUM PMS 511C	 WILD MULBERRY PMS 7666C	 PURPLE PMS 2617C	 ULTRA VIOLET PMS 2685C	 MAGENTA MAGIC PMS 258C	 PINKY PURPLE PMS 674C	 LAVENDER PMS 2563C	 TRUE VIOLET PMS 271C
 CRANBERRY PMS 215C	 HOT PINK PMS 214C	 LIPSTICK PINK PMS 191C	 DUSTY PURPLE PMS 17-1610 TCX	 DUSTY PINK PMS 500CP	 CANDYFLOSS PINK PMS 204C	 BABY PINK PMS 1895C	 JET BLACK PMS BLACK
 DEEP BLACK PMS BLACK	 BLACK SMOKE PMS 19-3902TCX	 STORM GREY PMS BLACK 7C	 SHARK GREY NEW PMS 19-0201 TCX	 CHARCOAL PMS 18-5210TCX	 STEEL GREY PMS 425C	 MOONDUST GREY PMS 428CP	 HEATHER GREY PMS COOL GRAY 5C
 ASH PMS COOL GRAY 2 UP	 ARCTIC WHITE PMS WHITE	ALL COLOURS HAVE THE NEAREST PANTONE REFERENCE LISTED – ACTUAL SHADES MAY VARY AS COLOUR REPRESENTATION IS ONLY AS ACCURATE AS THE PRINTING PROCESS WILL ALLOW.					

# TO FIT GUIDE

## MEN'S / UNISEX CLOTHING

	XS	S	M	L	XL	XXL	3XL	4XL	5XL
TO FIT CHEST CM	68	91	101	111	121	132	142	152	157
TO FIT CHEST INCHES	34	36	40	44	48	52	56	60	62
TO FIT WAIST CM	28 – 30	30 – 32	32 – 34	34 – 36	36 – 38	38 – 40	40 – 42	42 – 44	44 – 46
TO FIT WAIST INCHES	71 – 76	76 – 81	81 – 86	86 – 91	91 – 96	96 – 101	101 – 106	106 – 111	111 – 116
INTERNATIONAL SIZES	XS	S	M	L	XL	XXL	3XL	4XL	5XL
FRENCH	40	42	44	46	48	50	52	54	56
ITALIAN	44	46	48	50	52	54	56	58	60
GERMAN	32	33	34	36	38	40	42	44	46
NETHERLANDS	32	33	34	36	38	40	42	44	46
SPAIN	40	42	44	46	48	50	52	54	56
USA	34	36	38	40	42	44	46	48	50

## LADIES' CLOTHING

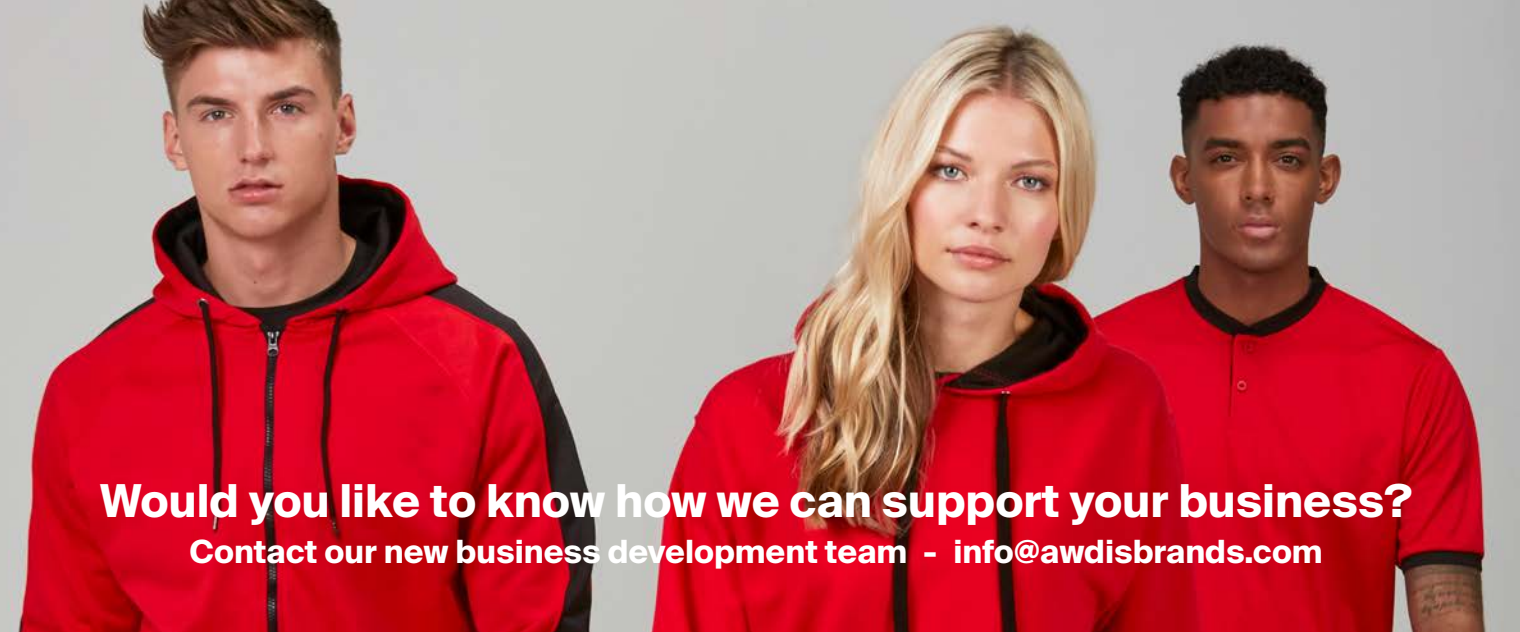
	6 XXS	8 XS	10 S	12 M	14 L	16 XL	18 XXL
TO FIT WAIST CM	22 – 24	24 – 26	26 – 28	28 – 30	30 – 32	32 – 34	34 – 36
TO FIT WAIST INCHES	56 – 61	61 – 66	66 – 71	71 – 76	76 – 81	81 – 86	86 – 91
INTERNATIONAL SIZES	6	8	10	12	14	16	18
FRENCH	34	36	38	40	42	44	46
ITALIAN	38	40	42	44	46	48	50
GERMAN	32	34	36	38	40	42	44
NETHERLANDS	32	34	36	38	40	42	44
SPAIN	34	36	38	40	42	44	46
USA	2	4	6	8	10	12	14

## CHILDREN'S CLOTHING

	XXS	XS	S	M	L	XL
CHEST	24"	26"	28"	30"	32"	34"
AGE	1 – 2	3 – 4	5 – 6	7 – 8	9 – 11	12 – 13
HEIGHT (CM)	90	102	114	126	138	150
INTERNATIONAL SIZES	XXS	XS	S	M	L	XL
CHEST	24"	26"	28"	30"	32"	34"
AGE	1 – 2	3 – 4	5 – 6	7 – 8	9 – 11	12 / 13
HEIGHT (CM)	80 – 92	98 – 104	110 – 116	122 – 128	134 – 146	152 – 158

CHOOSE  
ORGANIC





Orange Crush	Mustard	Gold	Sun Yellow	Electric Yellow	Sherbet Lemon	Vanilla Milkshake	Blush	Nude	Desert	Caramel Toffee	Hot Chocolate	Electric Green	Lime Green	Kelly Green	NEW	Dusty Green	Earthy Green	Combat Green	Olive Green	Bottle Green	Forest Green	Mint Green	NEW	Peppermint	Turquoise Blue	Jade	Sky Blue	Turquoise Surf	Hawaiian Blue	Azure Blue	Sapphire Blue	Royal Blue	Reflex Blue	Airforce Blue	Ink Blue	Navy	French Navy	Oxford Navy	New French Navy			
●	●	●	●		●	●		●	●	●	●		●	●	●	●			●	●	●		●		●	●	●	●		●	●	●	●		●	●			●	●		
●			●	●		●		●				●	●	●					●	●	●		●	●	●	●	●	●	●	●	●	●	●		●	●			●	●		
●		●	●	●		●					●	●	●	●	●				●	●	●		●	●	●	●	●	●	●	●	●	●	●	●		●	●			●	●	
●			●	●		●		●			●	●	●	●	●				●	●	●		●	●	●	●	●	●	●	●	●	●	●	●	●		●	●			●	●
●	●	●	●	●								●	●	●	●				●	●	●			●		●	●			●	●	●	●	●	●		●	●			●	●
														●		●				●	●										●	●	●	●						●	●	
		●																		●	●										●	●	●	●							●	●
			●	●	●	●					●	●	●	●	●					●	●										●	●	●	●							●	●
			●	●		●						●	●	●	●				●	●	●										●	●	●	●							●	●
				●									●	●	●					●	●										●	●	●	●							●	●
													●	●	●					●	●										●	●	●	●						●	●	
													●	●	●					●	●										●	●	●	●						●	●	
													●	●	●					●	●										●	●	●	●						●	●	
													●	●	●					●	●										●	●	●	●						●	●	
													●	●	●					●	●										●	●	●	●						●	●	
													●	●	●					●	●										●	●	●	●						●	●	
													●	●	●					●	●										●	●	●	●						●	●	
													●	●	●					●	●										●	●	●	●						●	●	
													●	●	●					●	●										●	●	●	●						●	●	
													●	●	●					●	●										●	●	●	●						●	●	
													●	●	●					●	●										●	●	●	●						●	●	
													●	●	●					●	●										●	●	●	●						●	●	
													●	●	●					●	●										●	●	●	●						●	●	
													●	●	●					●	●										●	●	●	●						●	●	
													●	●	●					●	●										●	●	●	●						●	●	
													●	●	●					●	●										●	●	●	●						●	●	
													●	●	●					●	●										●	●	●	●						●	●	
													●	●	●					●	●										●	●	●	●						●	●	
													●	●	●					●	●										●	●	●	●						●	●	
													●	●	●					●	●										●	●	●	●						●	●	
													●	●	●					●	●										●	●	●	●						●	●	
													●	●	●					●	●										●	●	●	●						●	●	
													●	●	●					●	●										●	●	●	●						●	●	
													●	●	●					●	●										●	●	●	●						●	●	
													●	●	●					●	●										●	●	●	●						●	●	
													●	●	●					●	●										●	●	●	●						●	●	
													●	●	●					●	●										●	●	●	●						●	●	
													●	●	●					●	●										●	●	●	●						●	●	
													●	●	●					●	●										●	●	●	●						●	●	
													●	●	●					●	●										●	●	●	●						●	●	
													●	●	●					●	●										●	●	●	●						●	●	
													●	●	●					●	●										●	●	●	●						●	●	
													●	●	●					●	●										●	●	●	●						●	●	
													●	●	●					●	●										●	●	●	●						●	●	
													●	●	●					●	●										●	●	●	●						●	●	
													●	●	●					●	●										●	●	●	●						●	●	
													●	●	●					●	●										●	●	●	●						●	●	
													●	●	●					●	●										●	●	●	●						●	●	
													●	●	●					●	●										●	●	●	●						●	●	
													●	●	●					●	●										●	●	●	●						●	●	
													●	●	●					●	●										●	●	●	●						●	●	
													●	●	●					●	●										●	●	●	●						●	●	
													●	●	●					●	●										●	●	●	●						●	●	
													●	●	●					●	●										●	●	●	●						●	●	
													●	●	●					●	●										●	●	●	●						●	●	
													●	●	●					●	●										●	●	●	●						●	●	
													●	●	●					●	●										●	●	●	●						●	●	
													●	●	●					●	●										●	●	●	●						●	●	
													●	●	●					●	●										●	●	●	●						●	●	
													●	●	●					●	●										●	●	●	●						●	●	
													●	●	●					●	●										●	●	●	●						●	●	

# Just Hoods<sup>®</sup>

AWDis



[www.justhoodsbyawdis.com](http://www.justhoodsbyawdis.com)

f @justhoods

📷 @justhoods

🐦 @justhoods

